

# Western United Electric Supply Corporation

## The Supplier

Volume 7, Issue 3

October 2014

### The Supplier

A Quarterly Publication of  
Western United Electric  
Supply Corporation

Headquarters  
100 Bromley  
Business Pkwy  
Brighton, CO 80603

New Mexico Branch  
7535 2nd Street NW Bldg D  
Albuquerque, NM 87107

Phone (303) 659-2356  
Toll Free (800) 748-3116  
FAX (303) 659-8598

### **WESTERN UNITED MISSION STATEMENT**

**To be the distributor of  
choice for all electric  
utilities in the Rocky  
Mountain Region**

**Serving CO, WY, NM, NE,  
UT, AZ, NV & KS**

### *Happy Holidays*

It is with pleasure that we pause from the usual routine of business to say **Thank You** for your friendship, goodwill and loyalty.



May the happiness and good cheer of the holiday season be with you and yours throughout the year to come.

### **Holiday Schedule**

WUE Offices will be Closed

Thursday November 27th - Thanksgiving Day  
Friday November 28th - Day after Thanksgiving  
Thursday December 25th - Christmas Day  
Friday December 26th - Day after Christmas  
Thursday January 1st - New Years Day  
Friday January 2nd - Day after New Years

# WUE UPDATE

Patronage checks and certificates totaling over \$4.5M (based on member purchases for the period from July 1, 2013 through June 30, 2014) have been mailed to all members. The staff at WUE thanks you for all of your support. Where else can you buy overhead and underground construction materials or required tools at competitive prices, shipped to members out of the two WUE warehouses and delivered weekly by WUE trucks directly to your warehouse PLUS receive a substantial year end refund on your purchases. **ONLY FROM WUE!**

Ermco, a cooperatively owned manufacturer of transformers has again extended capital credits to WUE for purchases of transformers from them during calendar year 2013. Those credits are extended to WUE members as part of our fiscal year patronage.

Navopache Electric Cooperative in Lakeside Arizona is now a participant in WUE's inventory management program. They are the 26th WUE member to join the program.

Steve Taylor has joined the Brighton, CO staff as a Technical products and Account manager providing service to customers on the front range of Colorado as well as assisting other account managers and WUE members on technical products. Steve recently returned home to Colorado from a previous job in the electric utility industry in Wisconsin.

EUDA members (other coop owned suppliers including General Pacific, Resco, Texas Electric, Arkansas Electric, United Utility Supply, Gresco, Tema and Ceeus met in September with NRECA personnel to converse on supply chain issues, technology strategies and the future value that EUDA members can bring to their Electric Coop Members. EUDA members also exchanged information on products, vendors and on-going relationships with each other.

WUE has access to over 30 different manufacturers of tools for use in either underground or overhead line construction. See your WUE account manager for more information. A new tool line card is on the last page of this publication..

Thomas and Betts Corporation has approved WUE as a full line distributor in CO, WY and NM. Thomas and Betts provides the ELASTIMOLD brand of rubber goods, reclosers and switchgear as well as BLACKBURN and HOMAC connectors, HITECH fuses, Joslyn Hi-Voltage and Fisher-Pierce products.

EYE LIGHTING now offers a full variety of LED fixtures in addition to their long lasting bulbs. See your WUE account manager for more information or call Wendy Pucket at the Brighton sales office.

PUPI has obtained RUS approval for their line of fiberglass crossarm brace assemblies for use on transmission H-frame structures. The assemblies offer longer life and are lighter in weight making installation quicker.

## New Products Update

OSHA's updated 1926 standards which take effect on April 1, 2015 will bring greater focus to hand protection in the electric utility industry, as well as other PPE and Fall Protection needs. As the standards apply to work gloves there are essentially two needs. 1) if the hazard level is above 14 cal/cm<sup>2</sup> - an arc rated glove must be worn. 2) if the hazard level is below 14 cal/cm<sup>2</sup> - an arc rated glove may be worn OR a heavy duty leather glove with a minimum weight of 12 oz/yd<sup>2</sup> may be worn. YOUNGSTOWN GLOVE COMPANY's entire line of Performance Leather gloves (designed and tested with cooperation from major US electric utilities including Xcel Energy) have specific arc ratings and a leather weight of 18 oz/yd<sup>2</sup>. They offer an FR rated Leather Utility glove lined with Kevlar which offers

comfort, durability, and protection for linemen and is rated to 27 Cal (thus approved for usage for situations over 14Cal and up to 27Cal. The glove form fits to the line worker's hands, is made of high-quality goatskin leather lined with Kevlar, and comes with a 4" safety cuff. Kevlar will reduce the frequency of cuts to the hand as it alone is 5x more cut resistant than traditional leather. Contact your WUE account manager for more information on gloves that meet the new safety requirements. Further information can also be obtained at the website [www.ytgloves.com](http://www.ytgloves.com)



**ELECTRICAL MATERIALS** has begun producing a Smart meter socket voltage tester adapter (#SMETVTAD). The adapter is designed for use on bypass handle or standard electric meter sockets when a socket disconnect (service interruption) is required. The adapter allows a lineworker to use an Ekstrom socket tester or similar voltage tester device to test a socket for backfeed and faults when performing a reconnect. Without this adapter plate, the only safe process to test the socket to see if it is safe on a reconnect order, before operating the bypass handle, is to open the customer's main breaker. See your WUE account manager for more information.



## New Products Update

**T&B ELASTIMOLD** has introduced a number of new products based on suggestions from utility underground crews. The following are now available. See your WUE account manager for more details or search on the Thomas & Betts web site at [www.tnb.com](http://www.tnb.com)



The Elastimold 25KV Combo T integral separable connectors now have a 25/28KV rating. Additionally they have the shortest elbow stack height in the industry thus eliminating the need to modify or replace entire enclosures. The existing line of 15KV connectors are also available.

The Elastimold Shrink-Fit Cable Joint combines the convenience of a pre-molded EPDM splice with the range-taking ability of cold shrink splices. The splice can be quickly installed using a self-ejecting plastic support core, which can be easily removed by hand.



The Elastimold Ground Device (GAD) provides a permanent, direct 600A, 25KV rated grounding connection with a removable protective cap that provides increased safety in everyday operations. Series GAD and GADDR are designed for standard C-clamp ground connections. Series BGAD and BGADDR are designed for ball-stud ground connections.





Spiking Aid T

The Elastimold Spiking Aid H has a replaceable appendage at a spiking position, with the option of a protection grounding position for work. Spiking Aid T is an extended-length T-Body spiking aid with a position for cutting or spiking, thus eliminating the need to replace or splice the cable.

Spiking Aid H



The Elastimold 600A Arrester delivers superior protection with a direct 600A installation. It has increased fault duty and requires fewer parts during the installation.



The Elastimold K656DR deadbreak insulated cap has been improved with a redesigned stainless steel bail that is stronger.



## New Products Update



**POWERLINE SENTRY** has introduced a new line of Raptor Guard Wildlife Perching Excluders (Spikes) in order to prevent Raptors from nesting on crossarms. The spikes are UV resistant fiberglass uprights with saddles for installation. They can withstand winds over 100 mph and actually cover the entire cross-arm. Available in multiple lengths. Please see your WUE account manager for more details.

Product Number	Description	Mount Type	Installation Method	Box Qty
RGSP-48	48 inch spike strip with Fiberglass spikes for 10' cross arms	3 3/4" Slip-on	Gloved	20
RGSP-36	36 inch spike strip with Fiberglass spikes for 8' cross arms	3 3/4" Slip-on	Gloved	20
RGSP-24	24 inch spike strip with Fiberglass spikes for 8' cross arms for use with optional RGSP-12 end cap	3 3/4" Slip-on	Gloved	20
RGSP-36-AN	36" inch spike strip with Fiberglass spikes and adjustable angle iron clamps	2.5"x2/5" up to 4"x4" Angle Iron	Gloved	20
RGSP-AL-36-AN	36 inch spike strip with aluminum spikes and adjustable angle iron clamps	2.5" x 2.5" up to 4"x4" angle iron	Gloved	20
RGSP-12	12" end cap for blocking perching on insulators	3 3/4" slip on	Gloved	20

## New Products Update

**SHAKESPEARE** has introduced a non-conductive fiberglass wall system for use in substations, replacing the traditional chain link fence option. The non-conductive fence provides safety and security around transformer yards and switch stations by deterring vandals, keeping wildlife out of the station and hiding unsightly equipment in suburban areas. The fencing material is fire, moisture, graffiti, and freeze resistant, structurally self supporting with easy on-site adjustments. It is available in multiple heights from 4' to 20' and is engineered to withstand up to 150 mph winds based on spacing of direct buried support posts. See your WUE account manager for more information.

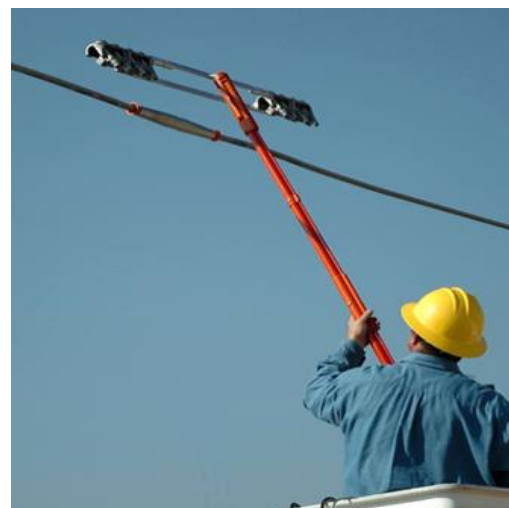
Before



After



**CLAMPSTAR** has introduced a new product that can prevent overhead splice failures, repair damaged overhead conductors and increase the ampacity of overhead systems. The specialty designed connector is easy to install (less than 5 minutes using a 3/4" socket or 9/16" socket depending on conductor size), works on ACSR, AAC, AAAC and ACSS conductor from #6 through 1780 and on voltages through 500KV. See your WUE account manager for more information.





# Western United Electric Supply Corporation Tool Line Card

